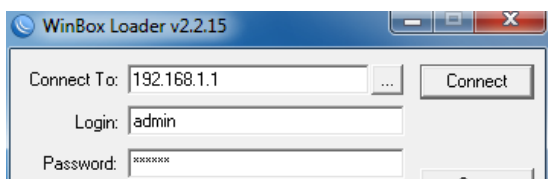
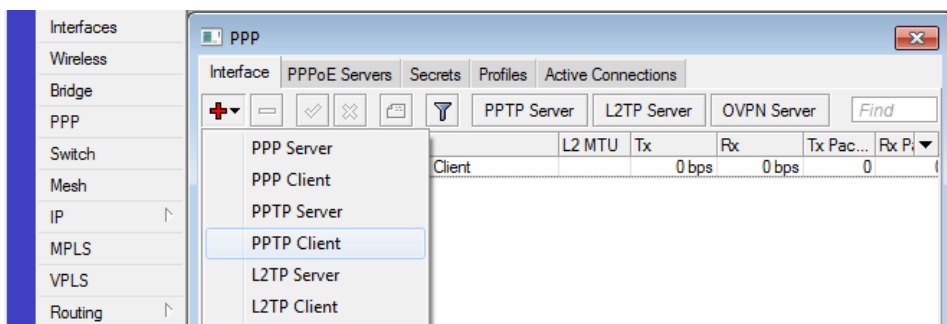


## UPUTE ZA SPAJANJE NA INTERNET PUTEM SERVISIA *ExtremeNet*

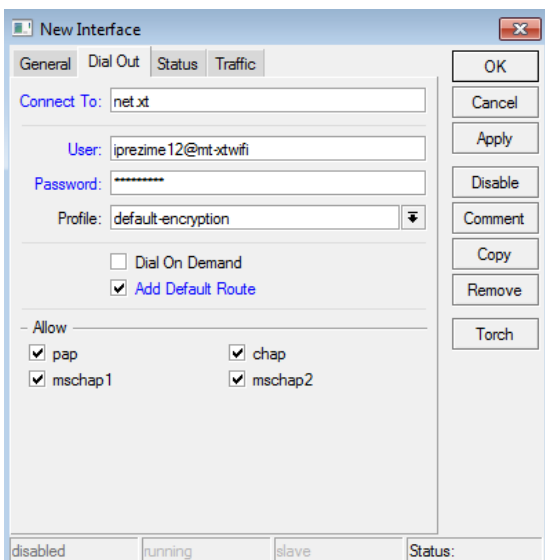
### Mikrotik RouterOS



1. Spojimo se na RouterOS s aplikacijom WinBox



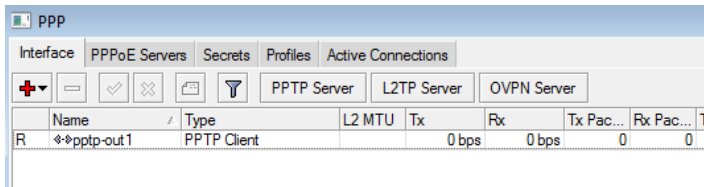
2. U lijevom izborniku odaberemo *PPP*, kliknemo na crveni plus i odaberemo *PPTP Client*



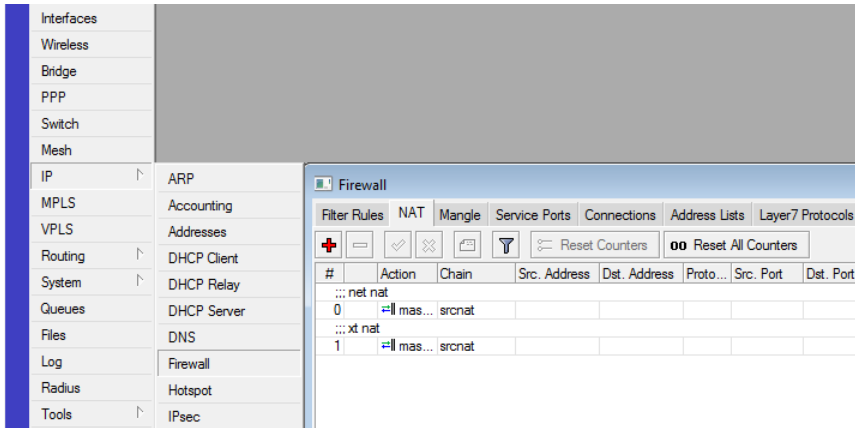
3. U prozoru *New Interface* unutar kartice *Dial Out* unesemo sljedeće:

- Connect To: *net.xt*
- User: *Korisničko ime s ugovora*
- Password: *Lozinka s ugovora*
- kvačica na *Add Default Route*

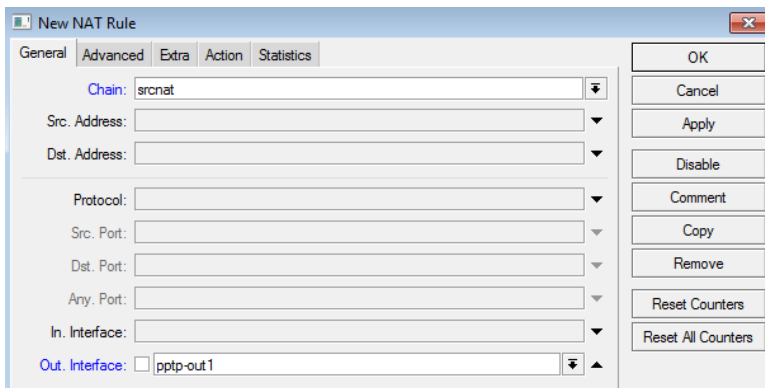
Ostale postavke ostavljamo kakve jesu i pristisnemo *OK*.



4. Ukoliko je veza uspješno ostvarena, pokraj *pptp-out1* se pojavljuje slovo R (*Running*)

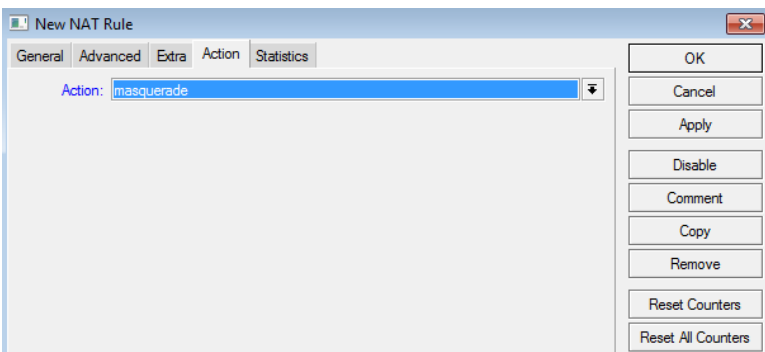


5. U glavnom izborniku odaberemo *IP*, pa *Firewall* i unutar kartice *NAT* pritisnemo crveni plus



6. U prozoru *New NAT Rule* unutar kartice *General* unesemo sljedeće:

- Chain: *srcnat*
- Out. Interface: *pptp-out1*



7. Unutar kartice *Action* odaberemo *masquerade* i pritisnemo *OK*

Time je konfiguracija završena.

# Microsoft Windows 7

View your basic network information and set up connections

NIKOLA-PC (This computer) — Network — Internet [See full map](#)

View your active networks [Connect or disconnect](#)

**Network**  
Home network

Access type: Internet  
HomeGroup: Joined  
Connections: Local Area Connection

Change your networking settings

- [Set up a new connection or network](#)  
Set up a wireless, broadband, dial-up, ad hoc, or VPN connection; or set up a router or access point.
- [Connect to a network](#)  
Connect or reconnect to a wireless, wired, dial-up, or VPN network connection.
- [Choose homegroup and sharing options](#)  
Access files and printers located on other network computers, or change sharing settings.
- [Troubleshoot problems](#)  
Diagnose and repair network problems, or get troubleshooting information.

1. Start → Control Panel → Network and Internet → Network and Sharing Center

2. Kliknemo na poveznicu *Set up a new connection or network*

Set Up a Connection or Network

Choose a connection option

- [Connect to the Internet](#)  
Set up a wireless, broadband, or dial-up connection to the Internet.
- [Set up a new network](#)  
Configure a new router or access point.
- [Connect to a workplace](#)**  
Set up a dial-up or VPN connection to your workplace.
- [Set up a dial-up connection](#)  
Connect to the Internet using a dial-up connection.

2. Odaberemo *Connect to a workplace* i kliknemo *Next*

How do you want to connect?

[Use my Internet connection \(VPN\)](#)  
Connect using a virtual private network (VPN) connection through the Internet.

Computer — Internet — Workplace

3. Odaberemo *Use my Internet connection (VPN)*

Type the Internet address to connect to

Your network administrator can give you this address.

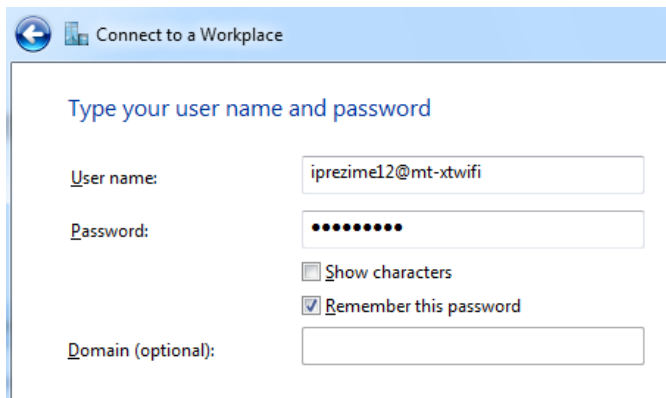
Internet address:

Destination name:

4. U idućem koraku unesemo sljedeće:

- Internet address: **net.xt**
- Destination name: **ExtremeNet**

Zatim pritisnemo *Next*.



5. U idućem koraku unesemo sljedeće:

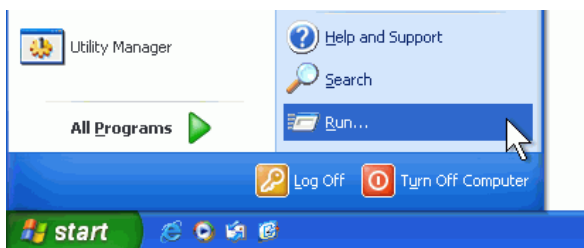
- User name: *Korisničko ime s ugovora*
- Password: *Lozinka s ugovora*
- kvaćica na **Remember this password**

Zatim pritisnemo *Connect*.

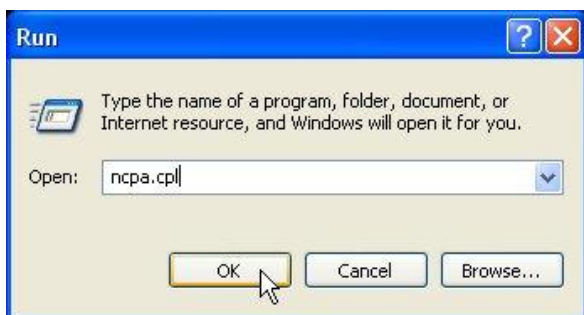
Time je konfiguracija završena.

**NAPOMENA:** Ukoliko se na ExtremeNet spajate s Windows 7, trebate imati unešenu *perzistentnu rutu*. U suprotnom nećete moći istovremeno biti povezani na internet i koristiti ostale resurse Extreme Wireless mreže.

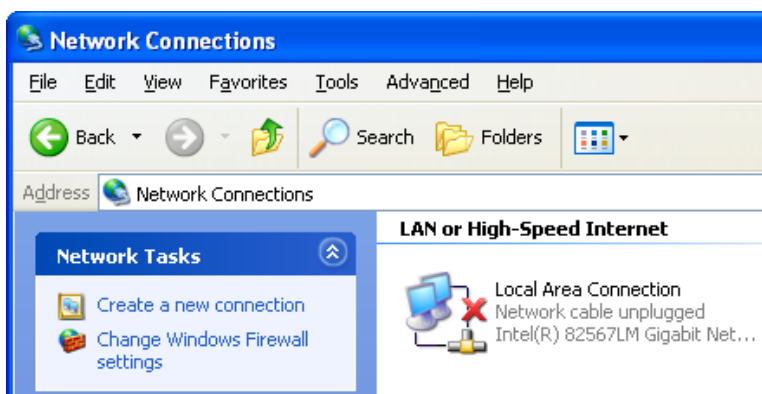
## Microsoft Windows XP



1. Start → Run



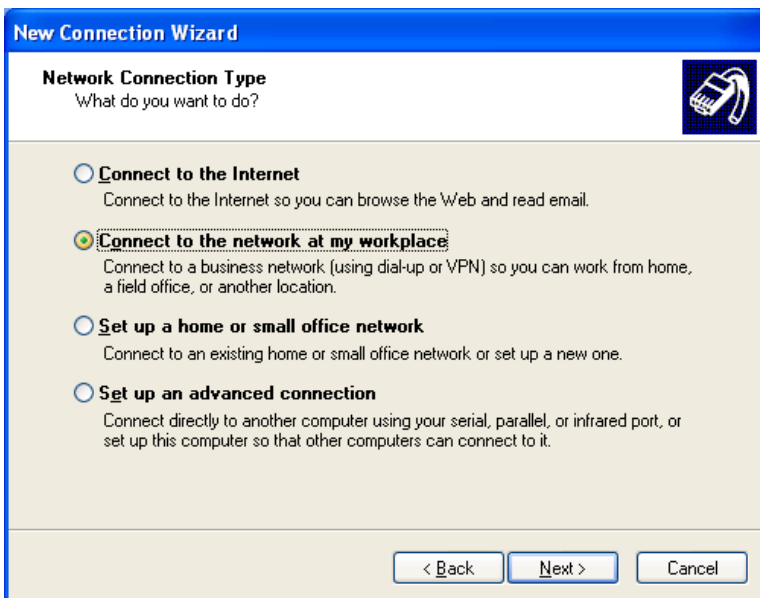
2. U polje *Open* upišemo *ncpa.cpl* i pritisnemo *OK*



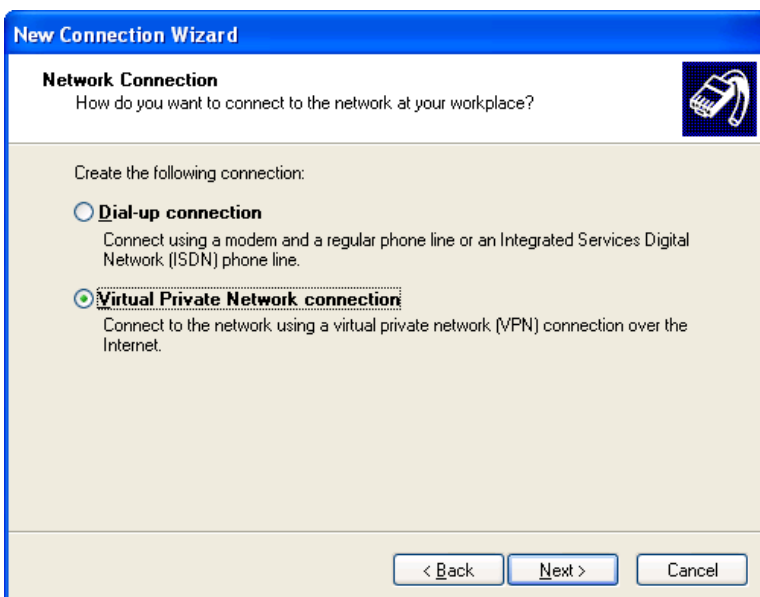
3. U izborniku s lijeve strane odaberemo *Create a new connection*



4. U prozoru *New Connection Wizard* pritisnemo *Next*



5. Odaberemo *Connect to the network at my workplace* i pritisnemo *Next*



6. Odaberemo *Virtual Private Network connection* i pritisnemo *Next*

**New Connection Wizard**

**Connection Name**  
Specify a name for this connection to your workplace.

Type a name for this connection in the following box.

Company Name

ExtremeNet

For example, you could type the name of your workplace or the name of a server you will connect to.

< Back   Next >   Cancel

7. U polje *Company Name* upišemo **ExtremeNet** i pritisnemo *Next*

**New Connection Wizard**

**VPN Server Selection**  
What is the name or address of the VPN server?

Type the host name or Internet Protocol (IP) address of the computer to which you are connecting.

Host name or IP address (for example, microsoft.com or 157.54.0.1):

net.xt

< Back   Next >   Cancel

8. U polje *Host name or IP address* upišemo **net.xt**, pritisnemo *Next* i u idućem koraku *Finish*



User name: iprezime12@mt-xtwifi

Password: ●●●●●●●●

Save this user name and password for the following users:

Me only

Anyone who uses this computer

Connect   Cancel   Properties   Help

9. Veza *ExtremeNet* sada bi se trebala pojaviti u *Network Connections* prozoru. Dva put kliknemo na nju i upišemo:

- User name: **Korisničko ime s ugovora**
- Password: **Lozinka s ugovora**

Zatim označimo *Save this user name and password for the following users* → *Me only* i nakon toga pritisnemo *Connect*.

Time je konfiguracija završena.

**NAPOMENA:** Ukoliko se na ExtremeNet spajate s Windows XP, trebate imati unešenu *perzistentnu rutu*. U suprotnom nećete moći istovremeno biti povezani na internet i koristiti ostale resurse Extreme Wireless mreže.

### Upute za ostale operativne sustave:

- Linux - <http://www.cyberciti.biz/tips/howto-configure-ubuntu-fedora-linux-pptp-client.html>
- MAC OS X - [http://www.vpngates.com/config\\_mac.htm](http://www.vpngates.com/config_mac.htm)
- FreeBSD - <http://www.freebsdidiary.org/pptp.php>
- iOS - <http://support.apple.com/kb/HT1424>
- Android - <http://www.techrepublic.com/blog/smartphones/connect-to-a-pptp-vpn-from-your-android-phone/2145>
- Symbian - <http://www.surfbouncer.com/symbian.htm>

Za bilo kakva pitanja budite nam se slobodni obratiti na *portal.xt* ili e-mail *info@extremewifi.hr*.